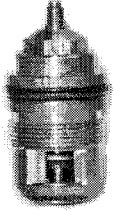


SUBMITTAL

Features:

TRV- 20

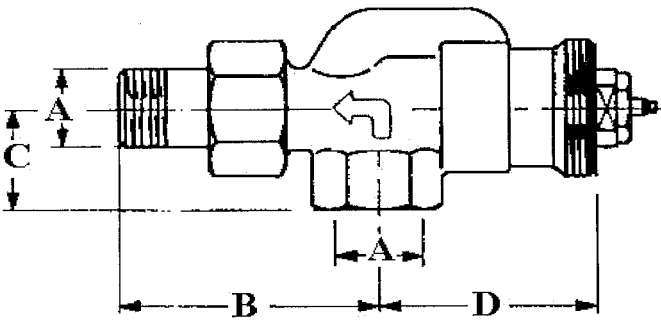
TRV-20 is a Fail - Close thermostatic radiator valve with a replaceable brass seat and disc for hot water applications.



This series valve contains American Steam Control's **unique** UNISERT-20, a fully removable insert, that fails in a 95% closed position if the control is removed or broken off (the remaining flow allows for frost protection).

With the use of the A.S.C. UNICHANGER, the valve insert may be changed without draining the system or disturbing the piping.

HORIZONTAL ANGLE VALVE - DIMENSIONS



Specifications

Application Range:

Max. Temperature: 250° F
 Max. Water Pressure: 150 psig
 Max. Steam Pressure: 15 psig

Materials:

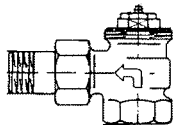
Valve Body: Brass, Nickel Plated
 Trim: Unisert -20
 Casing: Brass
 Stem: Stainless Steel
 Seat: Brass
 Disc: EPDM (Nordel)
 Fail - Close disc: Brass
 O-Ring Seals: EPDM (Nordel)

SIZE	A	B	C	D
1/2"	1/2"	1 3/4"	1 9/16"	1 1/2"
3/4"	3/4"	2 1/8"	1 3/4"	1 1/2"
1"	1"	2 3/8"	1 7/8"	1 1/2"

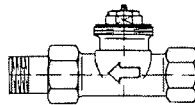
* End Connections: Available with FPT x MPT, FPT x Solder, Solder x Solder (Double Union Only)

Other Available Body Styles

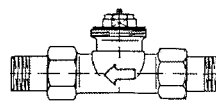
Vertical Angle



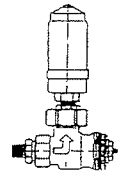
Straight Pattern Single Union



Straight Pattern Double Union



One Pipe Steam



CUSTOMER

PROJECT

ENGINEER

ARCHITECT

PRO/PO #

4/03 KW

American Steam Control

Division of Walsh Controls, Inc.

www.americansteamcontrol.com

101 Pennsylvania Blvd Pittsburgh, PA 15228

412-561-2195 1-888-703-3999

Fax: 412-344-8306